



OAKFIELD



Bluebell Close, Bexhill-On-Sea TN40 2FT

Offers Over £280,000



Bluebell Close, Bexhill-On-Sea TN40 2FT

Bluebell Close is a charming two-bedroom terraced house located in the sought-after area of Bexhill.

This delightful property features a bright and airy open-plan kitchen and lounge area, perfect for modern living and entertaining.

Upstairs there is two double bedrooms with modern fitted wardrobes and a tastefully appointment family bathroom.

The property boasts a private garden with a decking area, ideal for outdoor dining and relaxing in the warmer months. Additionally, there is a designated parking space for convenience.

Nestled in a quiet and well-maintained development, Bluebell Close offers a comfortable and stylish home with easy access to local amenities, transport links, and the beautiful Sussex coastline.





Dining Room/Living Room
21'9 x 13'3 (6.63m x 4.04m)

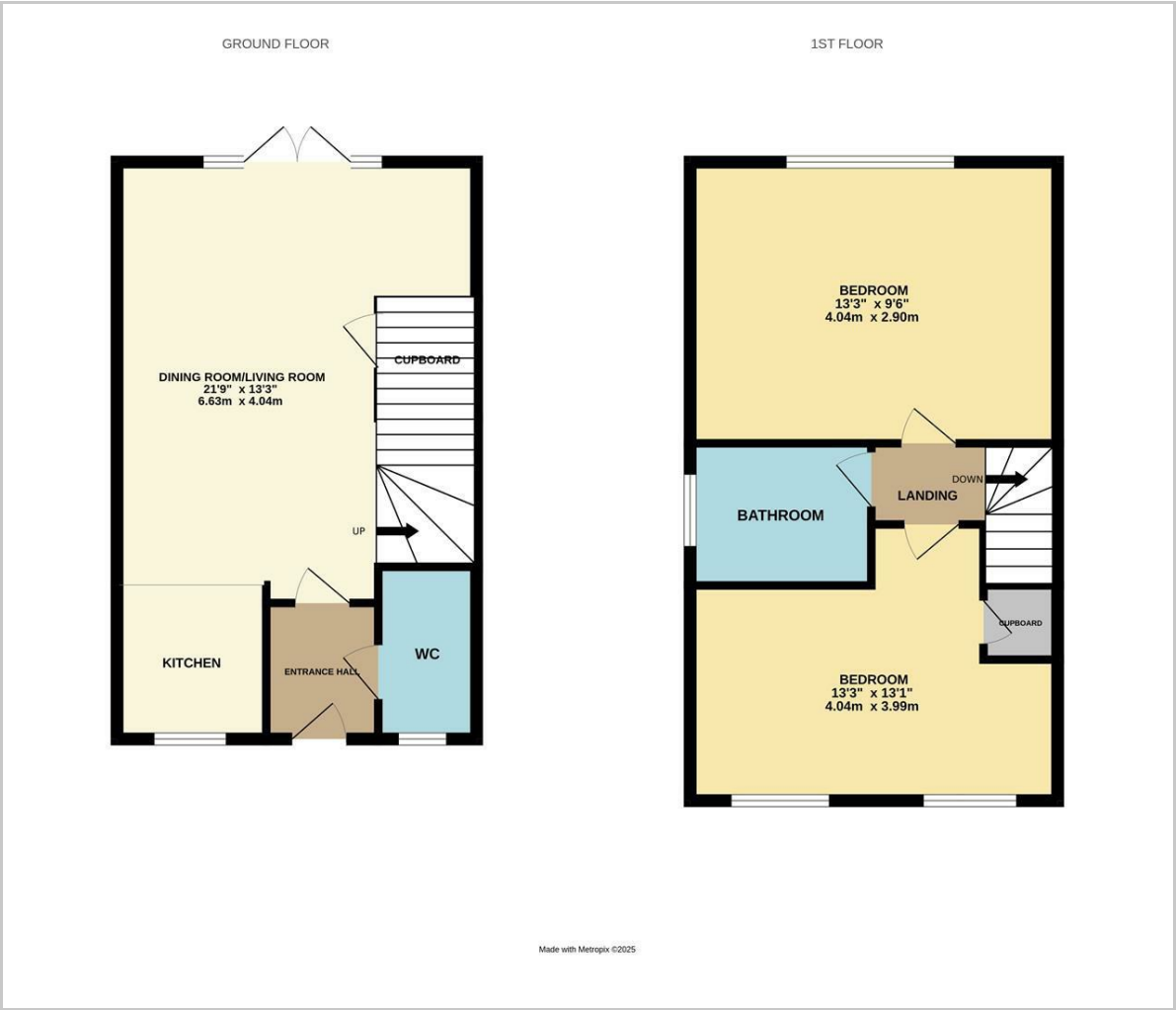
Bedroom
13'3 x 9'6 (4.04m x 2.90m)

Bedroom
13'3 x 13'1 (4.04m x 3.99m)

Council Tax Band - B



Floor Plan

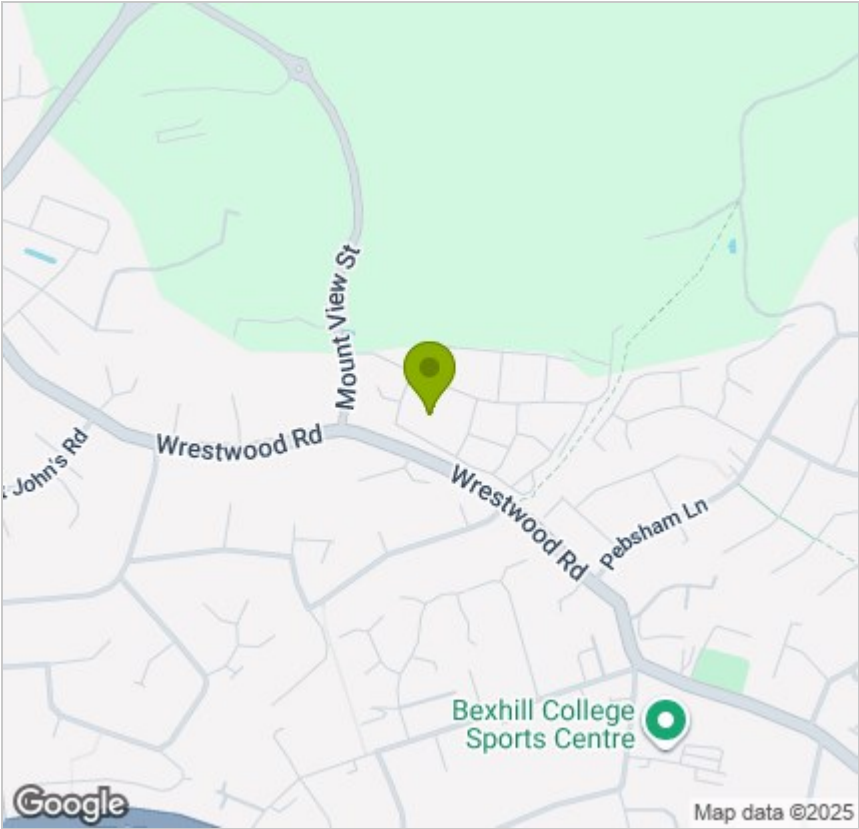


Viewing

Please contact us on 01424 224700 if you wish to arrange a viewing appointment for this property or require further information.

These particulars, whilst believed to be accurate are set out as a general outline only for guidance and do not constitute any part of an offer or contract. Intending purchasers should not rely on them as statements of representation of fact, but must satisfy themselves by inspection or otherwise as to their accuracy. No person in this firms employment has the authority to make or give any representation or warranty in respect of the property.

Area Map



Energy Efficiency Graph

